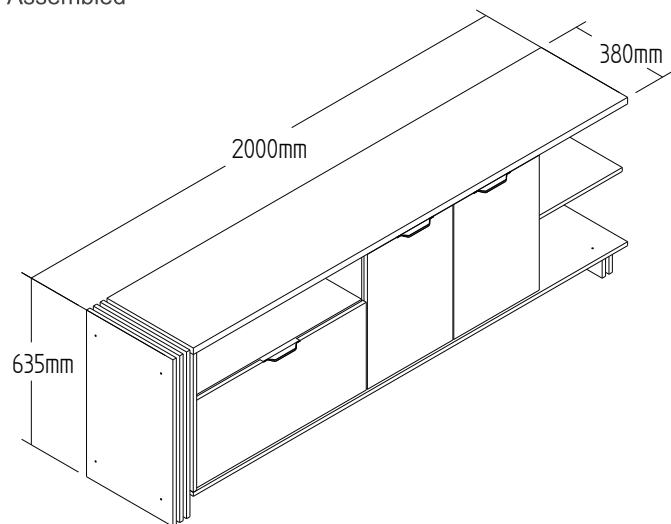


RK3100 - RACK

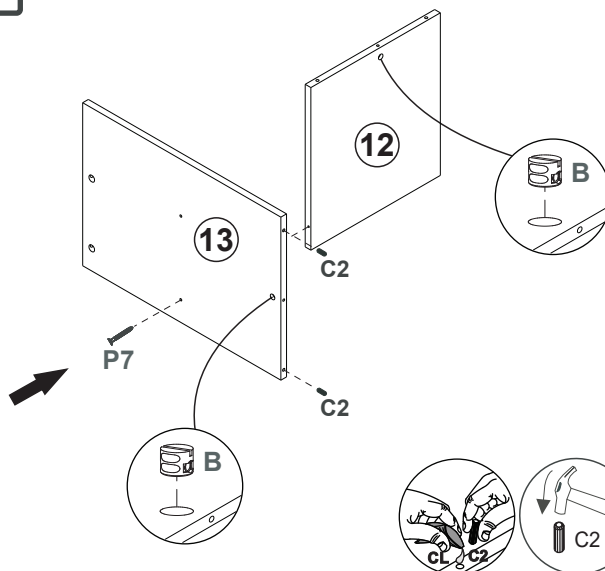
Manual de Montagem
Assembly Instructions
Instrucción de Montaje

decibal[®]
móveis

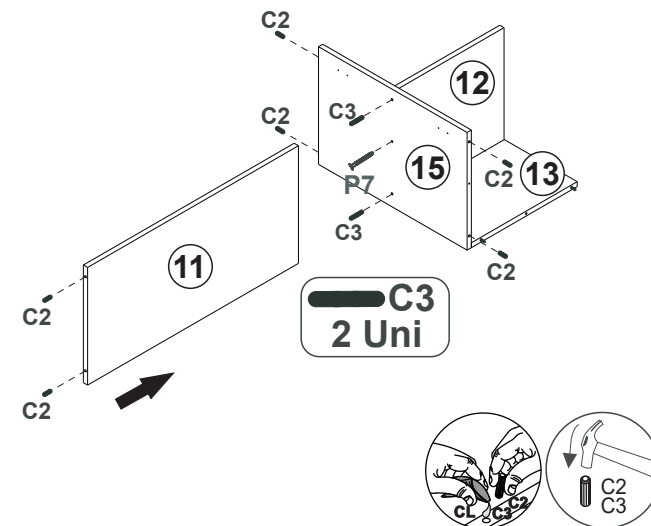
Produto Montado
Producto final
Assembled



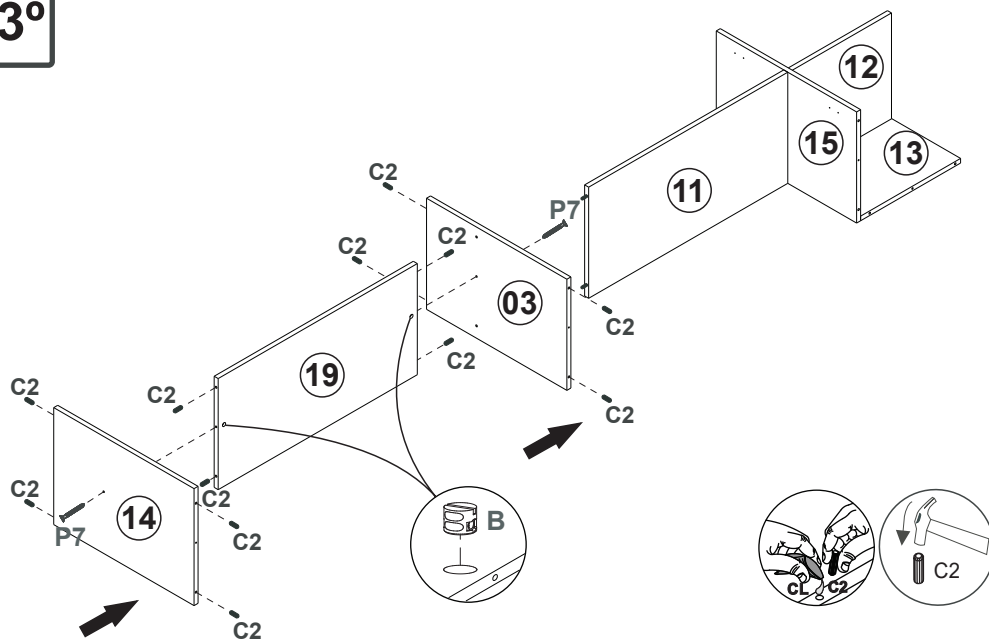
01°



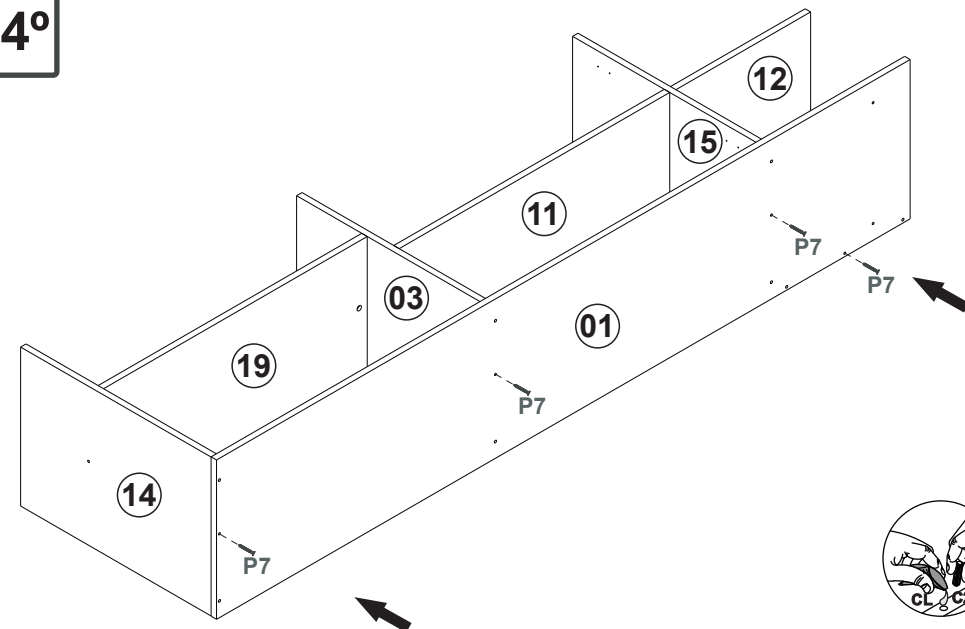
02°



03°

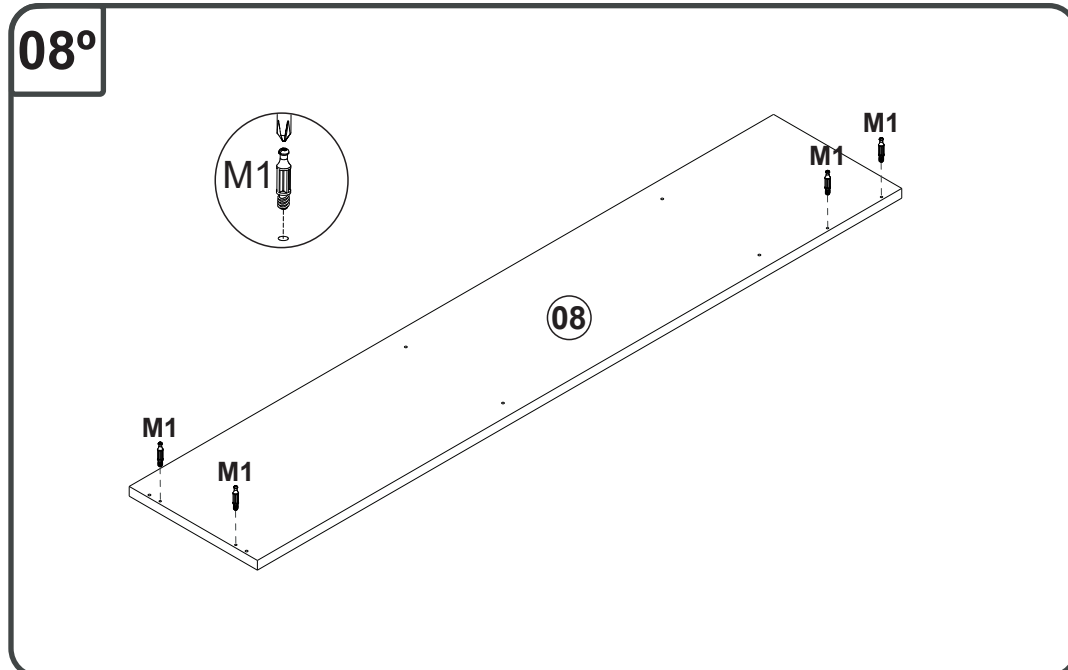
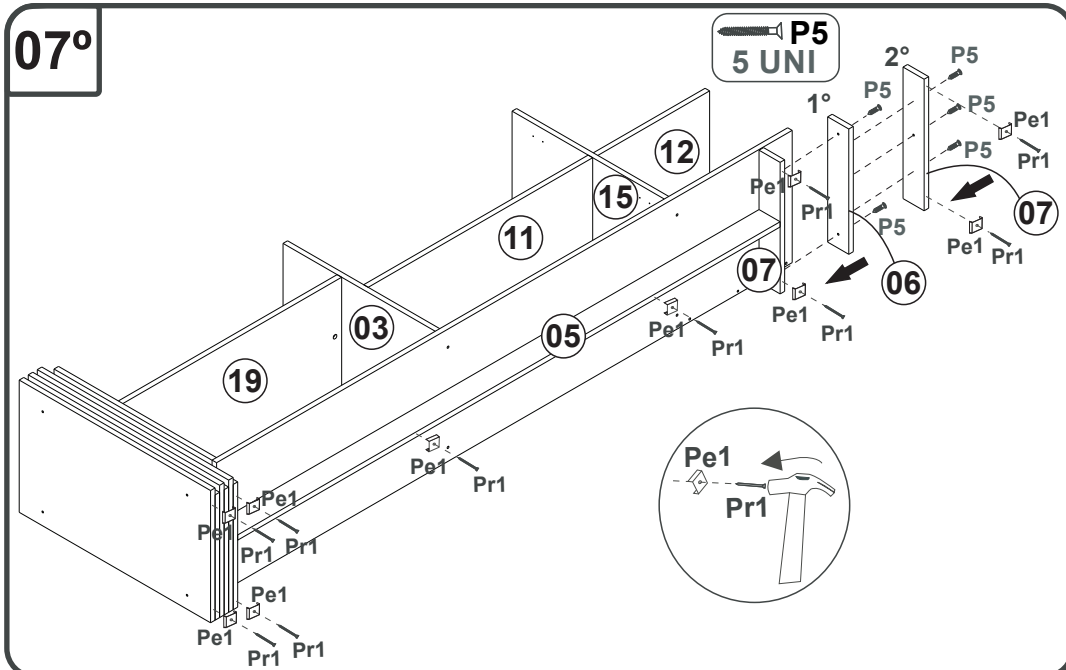
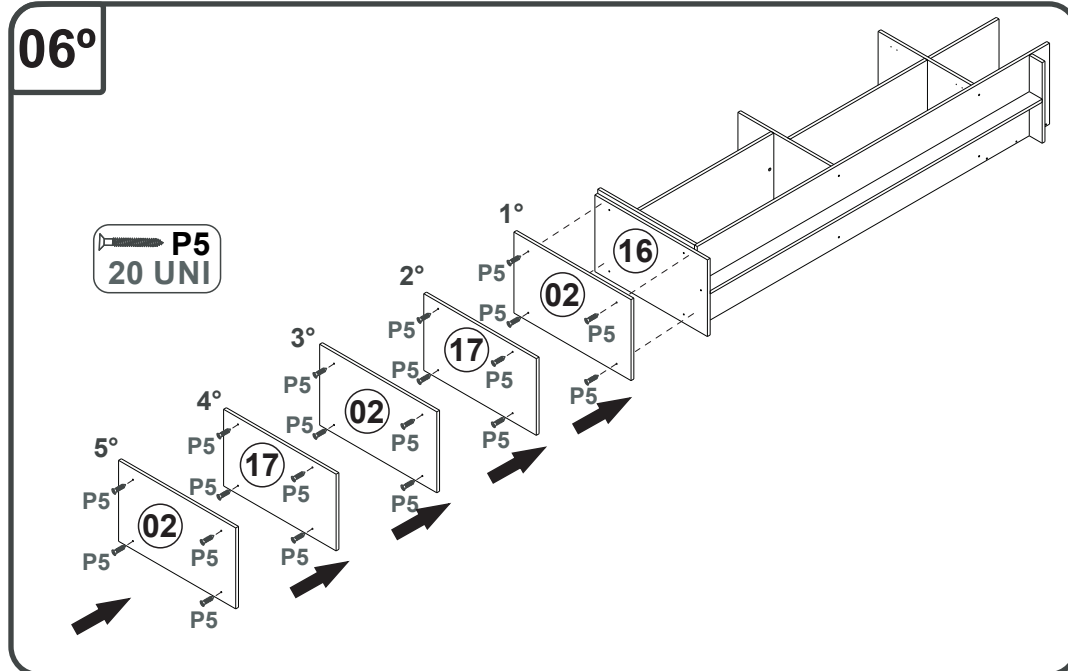
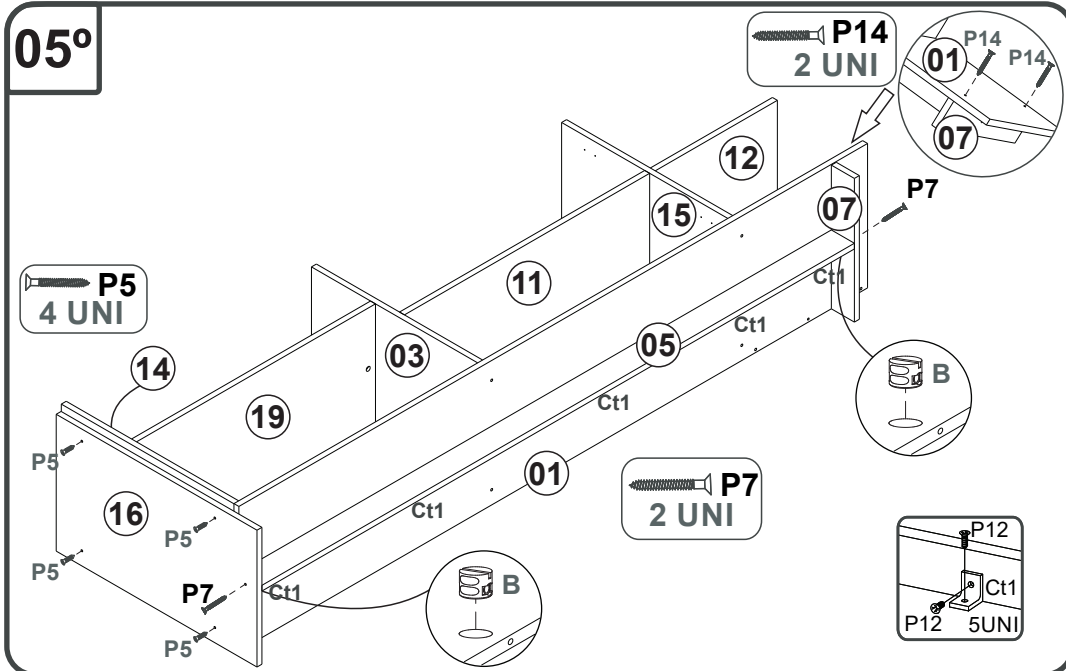


04°



RK3100 - RACK

Manual de Montagem
Assembly Instructions
Instrucción de Montaje

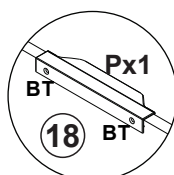
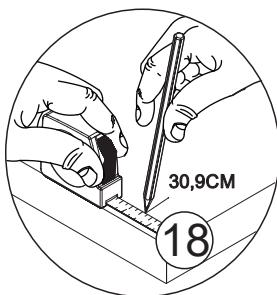
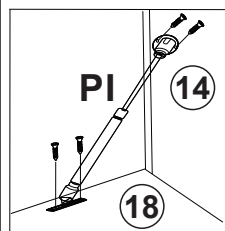
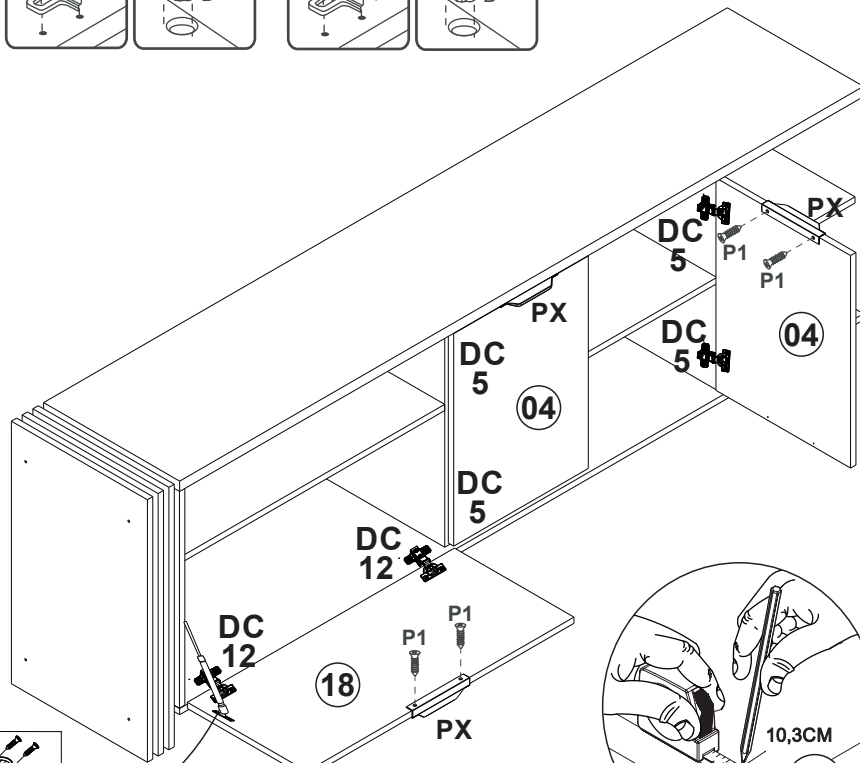
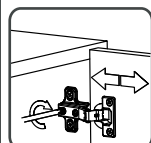
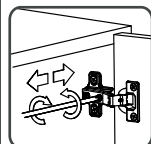
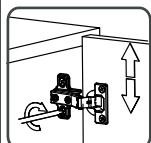
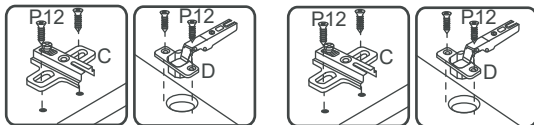


RK3100 - RACK

Manual de Montagem
Assembly Instructions
Instrucción de Montaje

decibal®

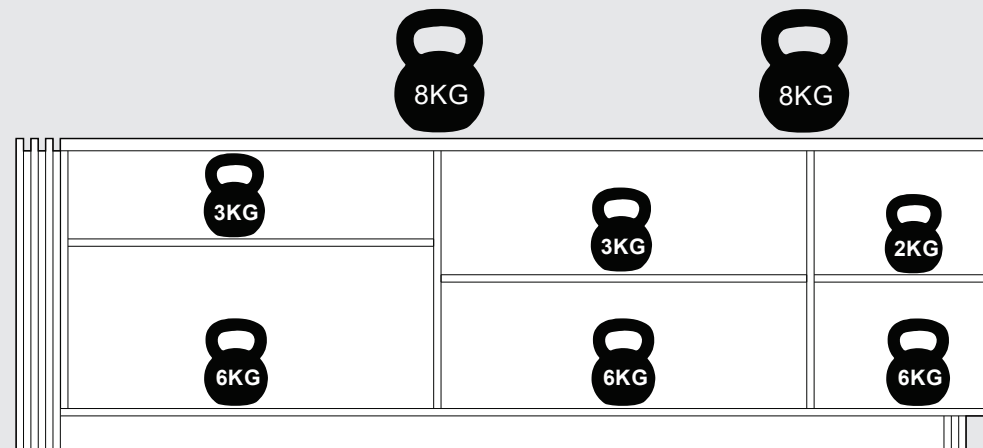
11°



ATENÇÃO!!!!

**MARCAÇÃO PRA O PRIMEIRO FURO DO PUXADOR
MARCADO PARA EL PRIMER AGUJERO
MARKING FOR THE FIRST HANDLE HOLE**

PESO SUPORTADO/PESO SOPORTADO/WEIGHT SUPPORTED



ATENÇÃO!!!! montadores e consumidores
* Ajustar o torque da parafusadeira para não danificar as peças escareando o parafuso *

ATENCIÓN!!!! montadores e consumidores
* Ajuste el torque del destornillador para no dañar las piezas avallanando el tornillo *

ATTENTION!!!! assemblers and consumers
* Adjust the torque of the screwdriver so as not to damage the parts by countersinking the screw *

ATENÇÃO!!!! montadores e consumidores
* Para limpar o móveis utilize somente um pano úmido (umedecido em água pura ou água com sabão neutro). Depois, passe um pano seco. Evite a umidade excessiva.
* Evite usar álcool, água sanitária, detergente e outros produtos químicos, mesmo diluídos em água. Não utilize produtos abrasivos de nenhuma espécie

ATENCIÓN!!!! montadores e consumidores
* Para limpiar el mueble utilice solamente un paño húmedo (humedecido con agua limpia o con un jabón suave). A continuación, utilice un paño seco. Evite el exceso de humedad.
* Evite uso de alcohol, hipoclorido solución basada, detergente y otros productos químicos, mismo diluídos en agua. No utilice productos abrasivos de ningún tipo.

ATTENTION!!!! assemblers and consumers
* To clean the furniture, use only a damp cloth (humidify it only in pure water or water and neutral soap). After, use a dry cloth. Avoid excessive humidity.
* Avoid using alcohol, bleach, detergent and other chemical products, even diluted in water. Do not use any kind of abrasive cleaning agents to clean the furniture.
The use of such products may jeopardize the final characteristics of the furniture.

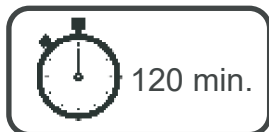
RK3100 - RACK

Manual de Montagem Assembly Instructions Instrucción de Montaje

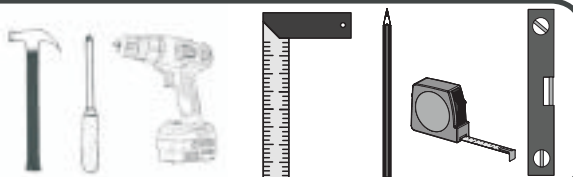
Relação de Peças/ Relación de Piezas/Parts List

Nº	CÓDIGO/CODE	DESCRIÇÃO/DESCRIPCIÓN/DESCRIPTION	QTD/CANT	VOL
1	0549729	BASE INF 1910X380X15 MM	1,00	01
2	0549738	PE MAIOR/PATA/FOOT 635X380X15 MM	3,00	01
3	0549733	DIV INF/DIVIDER 525X360X15 MM	1,00	01
4	0549743	PORTA/PUERTA/DOOR 514X376X15 MM	2,00	01
5	0549742	RODAPE FRT/ZÓCALO/BASEBOARD 1800X70X15 MM	1,00	01
6	0549741	AFASTADOR MENOR/ESPACIADOR/SPACER 360X70X15 MM	1,00	01
7	0549740	PE MENOR/PATA/FOOT 378X70X15 MM	2,00	01
8	0549734	TAMPO/TAOPA/TOP 1910X380X25 MM	1,00	01
9	0549746	COSTA MENOR/REVÉS/BACK 764X277X2,8 MM	2,00	01
10	0549745	COSTA MAIOR/REVÉS/BACK 764X355X2,8 MM	1,00	01
11	0549736	PRAT MAIOR/ESTANTE/SHELF 745X360X15 MM	1,00	02
12	0549737	PRAT MENOR/ESTANTE/SHEFLF 373X343X15 MM	1,00	02
13	0549732	TRASEIRA/TRASERO/REAR 525X374X15 MM	1,00	02
14	0549730	LATERAL ESQ/LATERAL/SIDE 525X379X15 MM	1,00	02
15	0549731	LATERAL DIR/LATERAL/SIDE 525X360X15 MM	1,00	02
16	0550232	COMP LATERAL ESQ/COMPLEMENTO/COMPLEMENT 610X360X15 MM	1,00	02
17	0549739	AFASTADOR MAIOR/ESPACIADOR/SPACER 610X360X15 MM	2,00	02
18	0549744	PORTA BASC/PUERTA/DOOR 746X334X15 MM	1,00	02
19	0549735	BASE SUP 745X360X15 MM	1,00	02

www.decibal.com.br



Ferramente necessárias
Necessary tools
Herramientas necesarias



Escala (N/A)

LEGENDA	DESCRIÇÃO/DESCRIPCIÓN/DESCRIPTION	CÓDIGO	QUANT.
PX	 PUXADOR/PEGADOR/HAND (PUX COVER TOPO 128MM)	11904 CHAMPAGNE	03
AD	 ADESIVO/ADHESIVO/ADHESIVE 15MM	NATURALLE09963	05
		CRISTALO 11778	02
AD	 ADESIVO/ADHESIVO/ADHESIVE 22MM	CRISTALO 11779	02
PI	 PISTÃO GÁS / PISTÓN DE GAS / GAS PISTON	01267 INVERTIDO 80N	01

Escala (1/1)

LEGENDA	DESCRIÇÃO/DESCRIPCIÓN/DESCRIPTION	CÓDIGO	QUANT.
M1	 PARAFUSO/TORNILLO/SCREW MINIFIX TAMBOR/BOLT MINIFIX (HASTE SIMPLES)	01314	04










RK3100 - RACK

Manual de Montagem
Assembly Instructions
Instrucción de Montaje








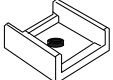


Ferragens/ Herrajes/ Hardware

escala (1:1)

LEGENDA	DESCRIÇÃO/DESCRIPCIÓN/DESCRIPTION	CÓDIGO	QUANT.
P7	 PARAFUSO/TORNILLO/SCREW 4X45	01318	10
PR1	 PREGO/CLAVO/NAIL 10X10	01330	60
C3	 CAVILHA/TARUGO/DOWEL 6X50 MM	01212	02
C2	 CAVILHA/TARUGO/DOWEL 6X30 MM	01211	21
P12	 PARAFUSO/TORNILLO/SCREW 3,5X13	09927	42
P5	 PARAFUSO/TORNILLO/SCRE 4X25	01317	29
P14	 PARAFUSO/TORNILLO/SCREW 3,5X35	11871	03
P1	 PARAFUSO/TORNILLO/SCREW 3,5X12	01328	06
B	 BUCJA/BUJE/BUCHING	02734	06

escala (N/A)

LEGENDA	DESCRIÇÃO/DESCRIPCIÓN/DESCRIPTION	CÓDIGO	QUANT.
CL	 COLA/PEGAMENTO/GLUE	01213	01
ET	 ETIQUETA LOGO DECIBAL/LABEL DECIBAL	01312	01
Ct1	 CANTONEIRA/PIEZA L/SHEET	03077	09
DC 5	 DOBRADIÇA/BISAGRA/HINGE D=26 MM C=5MM	01268	04
DC 12	 DOBRADIÇA/BISAGRA/HINGE D=26 MM C=12MM	01657	02
FX	 FIXADOR COSTA/FIJADOR FONDO/FIXER COAST	01331	10
BT	 BATENTE/BATIENTE DE SILICONA/SILICONE STOP 8MM	02921	02
Pe1	 PÉ/PATA/FOOT	01367	10

